



# INTERPRETING LIMB X-RAYS: A BRIEF GUIDE

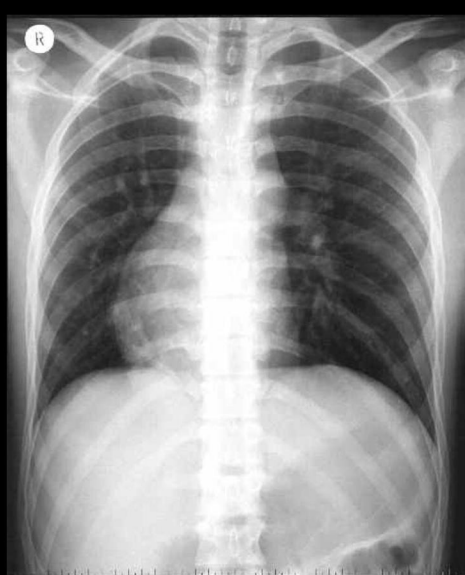
By Dr. Sarah Edwards @drsarahedwards

Interpreting limb x-rays can often seem a daunting task due to the number of bones and joints.

Just remember ....



# A



## ACCURATE

Is this the right patient?  
Is it the right image?  
Is it the correct view?  
Is the image adequate?

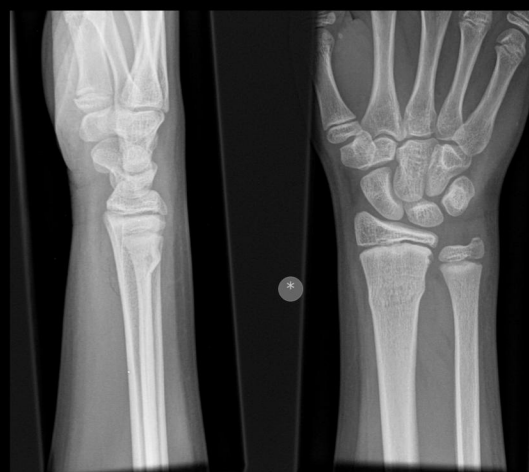
# B



## BONES

Review each bone; are there any irregularities or fractures?

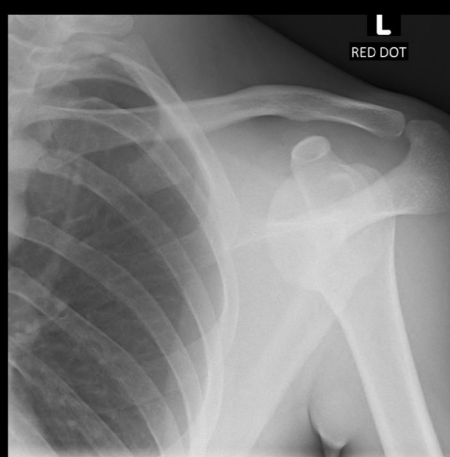
# C



## CORTEX

Is there any cortical or articular surface involvement

# D



## DISLOCATIONS

Are there any dislocations or subluxations?  
Is there any angulation?

# E



## EVERYTHING ELSE

Soft tissues?  
Foreign bodies  
etc.

### References

1. Radiopaedia. [www.radiopaedia.org](http://www.radiopaedia.org) @radiopaedia
2. Accident and Emergency Radiology: A survival guide. 3e. by Nigel Raby.

# #EM3

East Midlands Emergency Medicine Educational Media